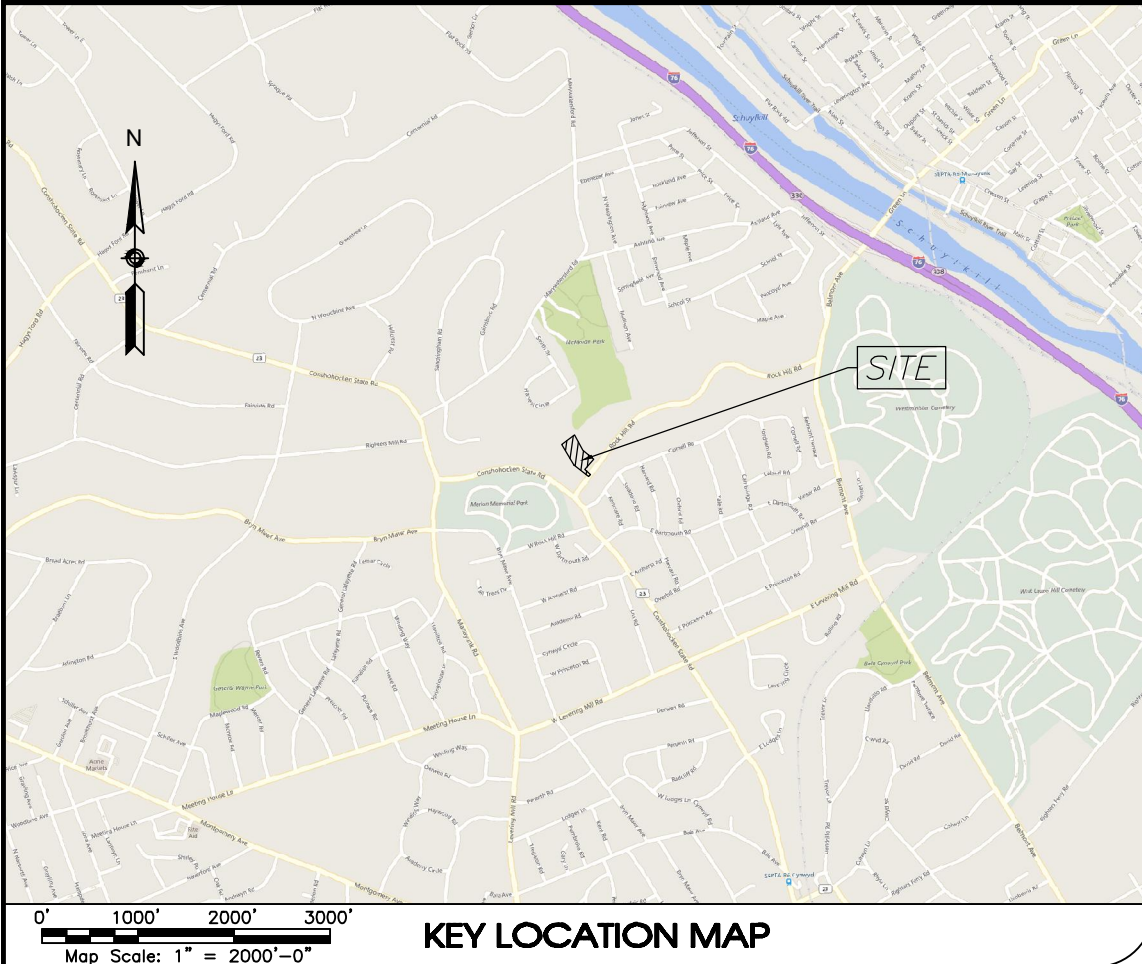
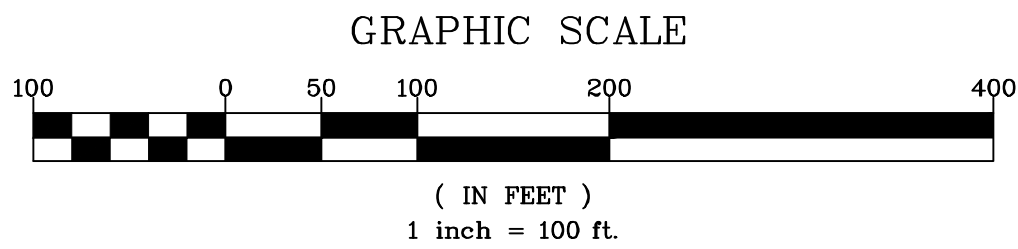


21 ROCK HILL ROAD

TENTATIVE SKETCH LAND DEVELOPMENT PLAN SET



VICINITY MAP INCLUDING STRUCTURES WITHIN 200' OF SITE
AERIAL PHOTOGRAPHY OBTAINED FROM BING MAPS CIRCA JULY 2017



DRAWING SCHEDULE

1. COVER SHEET
2. EXISTING CONDITIONS & CONSERVATION INVENTORY PLAN
3. PROPOSED SITE PLAN

CIVIL ENGINEER:
SITE ENGINEERING CONCEPTS, LLC

ATTN: ROBERT M. LAMBERT, P.E.
P.O. BOX 1992
SOUTHEASTERN, PA 19399
P: (610) 240-0450
E: RLAMBERT@SITE-ENGINEERS.COM

ARCHITECT:
BARTON PARTNERS

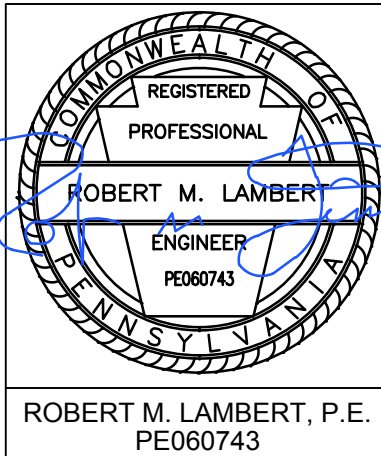
ATTN: MATTHEW KOENIG, AIA
700 EAST MAIN STREET,
SUITE 301
NORRISTOWN, PA 19401
P: (610) 930-2800, x229
E: MKOENIG@BARTONPARTNERS.COM

ATTORNEY:
COZEN O'CONNOR

ATTN: ROSS WEISS
200 FOUR FALLS CORPORATE CENTER,
SUITE 400
WEST CONSHOHOCKEN, PA 19428-0800
P: (610) 941-2361
E: RWEISS@COZEN.COM

APPLICANT/EQUITABLE OWNER:
21 ROCK HILL ROAD
ASSOCIATES, LLC.

ATTN: JB REIBSTEIN
446 GERMANTOWN PIKE
SUITE 145
LAFAYETTE HILL, PA 19444
P: (610) 635-9772



NUM.	DATE	REVISION
PLAN PREPARED BY: SITE ENGINEERING CONCEPTS, LLC P.O. BOX 1992 SOUTHEASTERN, PA 19399 P: 610-240-0450 F: 610-240-0451 E: INFO@SITE-ENGINEERS.COM		
PLAN PREPARED FOR: 21 ROCK HILL ROAD ASSOCIATES, LLC 21 ROCK HILL ROAD, BALA CYNWYD, PA 19004 LOWER MERION TOWNSHIP MONTGOMERY COUNTY PENNSYLVANIA DATE: SEPT 9, 2019		
COVER SHEET		SHEET 1 of 3 SCALE: 1"=20'

